

kinetec®

**SIMPLE, LIGHTWEIGHT & MODERN**

# ORTHOPAEDIC SUPPORTS & BRACES





## OASIS KNEE BRACE OA

For unicompartmental knee injuries requiring relief of the medial or lateral compartment. These injuries can range from joint cartilage damage to meniscus injuries, and congenital knee dysfunction. All require single locational relief and correction of the axis of the joint. Can be used in everyday activities.

**Product characteristics**

- Perfect adaptation to anatomical shaped limbs with simultaneous application of corrective force.
- Thin enough to wear the brace under clothing.
- Simple to fit, great value.

**Adjustable**

- Adjustable strap length.
- Adjustable frame alignment.
- Frame shape and matching.
- Angular range of motion.
- Corrective force.

**Size**

- Select left or right leg version.

Product code left **MQB31ALUXJ**  
Product code right **MQB31APUXJ**



## RUSH POST-OP KNEE BRACE

Can be used to treat a range of conditions which require immobilisation or control of knee range of movement after surgery or injury. Treatment of knee joint and soft tissue injuries.

**Product characteristics**

- Two stays provide lateral stabilisation.
- Five hook and loop fixing straps.
- Easy to operate monocentric hinge which controls range of motion every 10° for flexion & extension.
- Flat hinge.
- Soft padding protects the leg and ensures its optimal position.

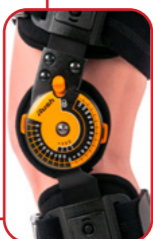
**Adjustable**

- Five straps can be individually adjusted.
- Intuitive length adjustment of thigh and calf supports.
- Front panel enables quick and easy adjustment of brace circumference.

**Size**

- Universal
- Fits both left & right legs.

Product code **DRQ10N2LAXXUP**



## FOLLOW FORCE KNEE BRACE

The Follow Force is a knee brace with a regulated range of motion which can be used to treat a range of injuries and be used to help the rehabilitation process. Developed in cooperation with sports professionals.

**Product characteristics**

- Contoured, light construction with non-slip pads and anti-migration straps.
- Patented, four-axis flat hinge reflecting physiological movement of the knee joint (rolling and sliding).
- Four-point support system and condyle pads for stabilising the knee joint.

**Adjustable**

- Comfortable straps with movable holders and fasteners.
- Extension and flexion blocks supplied are easy to fit to secure preferred range of movement.



FOLLOW FORCE KNEE BRACE					
PRODUCT CODE LEFT	PRODUCT CODE RIGHT	SIZE	THIGH CIRCUMFERENCE* (CM)	KNEE CIRCUMFERENCE (CM)	CALF CIRCUMFERENCE** (CM)
DRQ10Q1LAXL1P	DRQ10Q1LAXP1P	XS	33 - 39	30 - 33	25 - 30
DRQ10Q1LAXL2P	DRQ10Q1LAXP2P	S	39 - 47	33 - 35	30 - 35
DRQ10Q1LAXL3P	DRQ10Q1LAXP3P	M	47 - 53	35 - 38	35 - 40
DRQ10Q1LAXL4P	DRQ10Q1LAXP4P	L	53 - 59	38 - 43	40 - 47
DRQ10Q1LAXL5P	DRQ10Q1LAXP5P	XL	59 - 67	43 - 48	47 - 50
			* Measured 15 cm above patella	** Measured 15 cm below patella	

## FOLLOW KNEE BRACE

The Follow knee brace is a lightweight, rigid knee brace to provide functional support post injury. It has a regulated range of motion which can be used to treat a range of injuries. The brace can be used to help the rehabilitation process and regain the ability to participate in activities after knee joint injuries.

**Product characteristics**

- Lightweight, aluminium frame provides support.
- Six hook and loop straps provide easy fixation.
- Soft padding protects the leg and ensures optimal position.
- Anatomically profiled, light, openwork construction.
- Four - point support system with extension and flexion stops provided.

**Adjustable**

- Condylar and supracondylar pads (2/4/6mm).
- Moveable attachments for the straps to ensure optimal strap length.



FOLLOW FORCE KNEE BRACE					
PRODUCT CODE LEFT	PRODUCT CODE RIGHT	SIZE	THIGH CIRCUMFERENCE* (CM)	KNEE CIRCUMFERENCE (CM)	CALF CIRCUMFERENCE** (CM)
DRQ10Q1BEXL1P	DRQ10Q1BEXP1P	XS	33 - 39	30 - 33	25 - 30
DRQ10Q1BEXL2P	DRQ10Q1BEXP2P	S	39 - 47	33 - 35	30 - 35
DRQ10Q1BEXL3P	DRQ10Q1BEXP3P	M	47 - 53	35 - 38	35 - 40
DRQ10Q1BEXL4P	DRQ10Q1BEXP4P	L	53 - 59	38 - 43	40 - 47
DRQ10Q1BEXL5P	DRQ10Q1BEXP5P	XL	59 - 67	43 - 48	47 - 50
			* Measured 15 cm above patella	** Measured 15 cm below patella	





### ROM KNEE BRACE

Range of Motion (ROM) Knee Brace provide pre- and post-operative immobilisation through a range of extension and flexions. The brace has four padded leg straps hold the brace in position on the leg and the side bars provide collateral stability.

**Product characteristics**

- Controlled range of motion.
- Provides collateral stability.

**Adjustable**

- Easy to operate hinges which controls range of motion every 10° for extension, flexion & immobilisation.
- Metal bars can be shortened due to the break lines.
- Malleable metal sie bars.

**Size**

- Short: 57cm.
- Long: 63cm.

Short ROM Knee Brace **S-FIT-80-003-U9**  
 Long ROM Knee Brace **S-FIT-80-004-U9**

### WRAPAROUND KNEE BRACE

Designed to support injuries to the collateral ligaments and for mild instabilities of cruciate ligaments and meniscal injuries. The integrated, adjustable hinges provide lateral support.

**Product characteristics**

- This brace is compact, soft and made from breathable material to reduce sweating.
- Ideal for participating in a range of activities and sports.

**Adjustable**

- It has a wrap-around closure making it easy to administer.
- Easy to operate monocentric hinge which controls range of motion every 10° for flexion & extension.

**Size**

- Fits both left & right legs.
- Select size by measuring thigh circumference, 15 cm above mid-patella.

WRAPAROUND KNEE BRACE		
PRODUCT CODE	SIZE	CIRCUMFERENCE (CM)
S-FIT-80-006-U1	XS	31 - 37
S-FIT-80-006-U2	S	37 - 45
S-FIT-80-006-U3	M	45 - 51
S-FIT-80-006-U4	L	51 - 57
S-FIT-80-006-U5	XL	57 - 65
S-FIT-80-006-U6	XXL	65 - 74



### PULL-ON KNEE BRACE

Designed to support injuries to the collateral ligaments and for mild instabilities of cruciate ligaments and meniscal injuries.

**Product characteristics**

- This neoprene brace is compact, soft and made from breathable material to reduce sweating.
- Low profile and integrated hinges make it ideal for use when participating in sports and activities.

**Adjustable**

- The Pull-on brace has adjustable straps to create a good fit.

**Size**

- Fits the left & right legs.
- Select size by measuring thigh circumference, 15 cm above mid-patella.

### PULL-ON KNEE SUPPORT

The Adjustable Knee Support is designed to support mild instabilities of the knee joint, meniscal injuries and strains of the collateral ligaments with adjustable height abilities.

**Product characteristics**

- This lightweight support is compact, soft and made from breathable material to reduce sweating.
- Low profile and integrated hinges make it ideal for use when participating in sports and activities.
- The integrated, adjustable hinges provide lateral support.

**Adjustable**

- The ability to pull-on the support.
- Adjustable at the thigh and calf.

**Size**

- Fits the left & right legs.
- Select size by measuring thigh circumference, 15 cm above mid-patella.



PULL-ON KNEE SUPPORT		
PRODUCT CODE	SIZE	CIRCUMFERENCE (CM)
S-FIT-80-015-U2	S	37 - 45
S-FIT-80-015-U3	M	45 - 51
S-FIT-80-015-U4	L	51 - 57
S-FIT-80-015-U5	XL	57 - 65



PULL ON KNEE BRACE		
PRODUCT CODE	SIZE	CIRCUMFERENCE (CM)
S-FIT-80-007-U1	XS	31 - 37
S-FIT-80-007-U2	S	37 - 45
S-FIT-80-007-U3	M	45 - 51
S-FIT-80-007-U4	L	51 - 57
S-FIT-80-007-U5	XL	57 - 65
S-FIT-80-007-U6	XXL	65 - 74

### WRAPAROUND KNEE SUPPORT

The Wraparound Knee Support is designed to support mild instabilities of the knee joint, meniscal injuries and strains of the collateral ligaments with a wraparound application.

**Product characteristics**

- This brace is compact, soft and made from breathable material to reduce sweating.
- Low profile and integrated hinges make it ideal for use when participating in activities and sports.
- The integrated, adjustable hinges provide lateral support.

**Adjustable**

- The ability to pull-on the support.
- It has a wrap-around application.

**Size**

- Fits the left & right legs.
- Select size by measuring thigh circumference, 15 cm above mid-patella.



WRAPAROUND KNEE SUPPORT		
PRODUCT CODE	SIZE	CIRCUMFERENCE (CM)
S-FIT-80-016-U2	S	37 - 45
S-FIT-80-016-U3	M	45 - 51
S-FIT-80-016-U4	L	51 - 57
S-FIT-80-016-U5	XL	57 - 65
S-FIT-80-016-U6	XXL	65 - 74



### 3-PANEL KNEE SPLINT

The 3-Panel Knee Splint offers post-operative immobilisation and support following a range of knee injuries.

**Product characteristics**

- This brace is compact, soft and made from breathable material.
- Soft, skin-friendly material on the inside.
- Rigid medial, lateral and posterior stays.

**Adjustable**

- Hook and loop closures.

**Size**

- Fits both left & right legs.
- 3-panels allow easy adjustment for leg fit.
- Choose appropriate length (see table).



3-PANEL KNEE SPLINT		
PRODUCT CODE	SIZE	LENGTH (CM)
S-FIT-80-011-U2	S	45
S-FIT-80-007-U3	M	55
S-FIT-80-007-U4	L	65
S-FIT-80-007-U5	XL	75

### STRETCH SPLINT

The Stretch Splint minimises the pain and discomfort of Plantar Faciitis and Achilles Tendonitis. The foot angle is adjustable and the splint holds the foot in gentle dorsiflexion.

**Product characteristics**

- Allows consistent stretch by holding the foot in gentle dorsiflexion.
- Special slip resistant sole for better patient safety.

**Adjustable**

- Foot angle can be adjusted by touch and close fixation (for additional dorsiflexion).

**Size**

- Fits both left & right ankles.
- Select size via shoe sizes below (EU).



STRETCH SPLINT			
PRODUCT CODE	SIZE	SHOE SIZE FEMALE	SHOE SIZE MALE
S-FIT-80-004-U2	S	< 39	< 40
S-FIT-80-004-U3	M	39 - 42	41 - 44
S-FIT-80-004-U4	L	> 43	> 44

### PLANTAR FASCIITIS SPLINT

The Plantar Faciitis Splint minimises the pain and discomfort of plantar faciitis and Achilles tendonitis.

**Product characteristics**

- Soft padded cover provides greater patient comfort and protection against irritation to the skin and breakdown.

**Adjustable**

- Removable foam wedge insert is included for additional 5° stretch on the planter fascial.

**Size**

- Fits both left & right ankles.
- Select size via shoe sizes below (EU).



PLANTAR FASCIITIS SPLINT			
PRODUCT CODE	SIZE	SHOE SIZE FEMALE	SHOE SIZE MALE
S-FIT-80-005-U2	S	< 37	< 39
S-FIT-80-005-U3	M	38 - 39	40 - 41
S-FIT-80-005-U4	L	40 - 44	42 - 44
S-FIT-80-005-U5	XL	> 44	> 44



### AEROSTAB

The Aerostab stabilising ankle brace provides superb ankle support that protects against excessive inversion or eversion, prevents injuries and supports the recovery process post-injury.

Enjoy enhanced protection with this brace whether seeking full support or during recovery, the perfect solution to ensure ankle safety, regardless of lifestyle.

**Product characteristics**

- Use for sprain, protection against excessive inversion and eversion.
- Made from breathable material to reduce sweating.
- Soft padding protects the soft tissue.

**Adjustable**

- Intuitive system of lace fastening adjusts compression to patient's individual needs.
- Anatomically shaped stays reinforced with thermoplastic material that provides optimal stabilisation.

**Size**

- Fits both left & right ankles.
- Select size by measuring the ankle circumference over the heel.



### STABILISING ANKLE BRACE

The Stabilising Ankle Brace is perfect for use in post-traumatic conditions of ankle joint sprain and/or dislocation. It also allows stabilisation after surgery and ankle joint protection from recent recurrent injuries while participating in sport activities.

**Product characteristics**

- Upper part of the brace has air cushioning.
- Lower part of the brace is filled with gel with the ability to cool or warm.

**Adjustable**

- Adjustable straps for both height and width, ensures unhampered dorsiflexion/plantarflexion movement.

**Size**

- Universal.
- Fits both left & right ankles.

**Product code QAR03091**



AEROSTAB		
PRODUCT CODE	SIZE	ANKLE CIRCUMFERENCE (CM) MEASURED OVER THE HEEL
DRQI0POLAXXSP	S	27 - 30
DRQI0POLAXXMP	M	30 - 33
DRQI0POLAXXLP	L	33 - 36



### FOOT-RISE

The foot-rise helps with the prevention of foot-drop in cases of neuropathy of the Common Peroneal Nerve (CPN) and peroneal nerve palsies of various traumas.

**Product characteristics**

- Includes a foot wrap that can be applied even when the patient is not wearing shoes.
- The strapping is made from a knitted mesh fabric and elasticated foam to prevent irritations.
- The upper and lower parts can be connected to one another by a strong elastic strap with an easy fastening system.

**Adjustable**

- The transparent insert can be placed between the tongue and the laces of the shoe; the positioning determines the degree of dorsiflexion support.

**Size**

- Select size by measuring heel instep circumference.
- Fits both left & right ankles.



FOOT-RISE		
PRODUCT CODE	SIZE	CIRCUMFERENCE (CM)
MQBIFS	S	18 - 21
MQBIFM	M	22 - 26
MQBIFL	L	27 - 33



## TECHNICA TERAP

Designed for the treatment of the diabetic foot in its acute phase and for pressure unloading in case of neuropathology and ischemic forefoot or midfoot ulcers.

### Product characteristics

- Stabilising and thermoformed heel-counter and a shock-absorbing rigid and rocking outsole with a non-slip island to ensure better stability.
- All uppers have a super-soft padding and no internal seams in order to minimise the frictions.
- Thermoformable upper in pel-flex, which is partially waterproof, guarantees thermal and hygienic protection to the foot.

### Adjustable

- Multi-velcro closure guarantees a comfortable fit with ease to adjust, even with a bandaged foot.

### Size

- S - XXL
- Select show size from EU show size (see chart).



TECHNICA TERAP		
PRODUCT CODE	SIZE	EU SIZES
EX025200/S	S	34 - 35 - 36
EX025200/M	M	37 - 38 - 39
EX025200/L	L	40 - 41 - 42
EX025200/XL	XL	43 - 44 - 45
EX025200/XXL	XXL	46 - 47 - 48

INTERNAL MEASUREMENTS: TERAP & HEEL					
SIZES (MM)	S	M	L	XL	XXL
LENGTH	230	250	270	290	310
FOREFOOT WIDTH	95	100	105	110	115
HEEL WIDTH	78	80	82	86	90

## TECHNICA HEEL

Designed for the treatment of the diabetic foot in its acute phase and for the pressure unloading in case of neuropathic and ischemic forefoot or midfoot ulcers. Also ideal for post surgical treatments and for all foot surgeries.

### Product characteristics

- All uppers have super-soft padding with no internal seams to minimise the frictions.
- The square shape of the outsole offers more space for bandages.
- The balance of the weight is moved to the front of the foot.

### Adjustable

- Multi-velcro closures.
- Total opening with velcro steps.
- Movable rear-cover to preserve the heel from impacts.

### Size

- S - XXL
- Select show size from EU show size (see chart).



TECHNICA HEEL		
PRODUCT CODE	SIZE	EU SIZES
EX023000/S	S	34 - 35 - 36
EX023000/M	M	37 - 38 - 39
EX023000/L	L	40 - 41 - 42
EX023000/XL	XL	43 - 44 - 45
EX023000/XXL	XXL	46 - 47 - 48

INTERNAL MEASUREMENTS: TERAP & HEEL					
SIZES (MM)	S	M	L	XL	XXL
LENGTH	230	250	270	290	310
FOREFOOT WIDTH	95	100	105	110	115
HEEL WIDTH	78	80	82	86	90



## TECHNICA DIAB

The Technica Diab is a high leg-foot brace, which is adaptable to the patient. It allows the displacement of part of the load on the ankles and calves. The outsole, thanks to the features of movement control and pressure redistribution decompresses the areas affected by the injury, significantly improving ambulation.

### Product characteristics

- All uppers have super-soft padding with no internal seams to minimise the frictions.
- High thermoformable stiffener.
- Rigid, anti-flexion and rocking outsole. Variable volume.

### Adjustable

- Multi-velcro closures.

### Size

- S - XXL
- Select show size from EU show size (see chart).



TECHNICA DIAB		
PRODUCT CODE	SIZE	EU SIZES
EX027200/S	S	34 - 35 - 36
EX027200/M	M	37 - 38 - 39
EX027200/L	L	40 - 41 - 42
EX027200/XL	XL	43 - 44 - 45
EX027200/XXL	XXL	46 - 47 - 48

## TECHNICA CT DIAB

Toe cover to use with other Extrostyle foot braces. (Sold as single piece)

### Size

- S - XXL
- Select size to match boot.



TECHNICA CT DIAB		
PRODUCT CODE	SIZE	EU SIZES
EX021200/S	S	34 - 35 - 36
EX021200/M	M	37 - 38 - 39
EX021200/L	L	40 - 41 - 42
EX021200/XL	XL	43 - 44 - 45
EX021200/XXL	XXL	46 - 47 - 48



TECHNICA POST		
PRODUCT CODE	SIZE	EU SIZES
EX025400/S	S	34 - 35 - 36
EX025400/M	M	37 - 38 - 39
EX025400/L	L	40 - 41 - 42
EX025400/XL	XL	43 - 44 - 45
EX025400/XXL	XXL	46 - 47 - 48

## TECHNICA POST

Low leg-foot brace, which is adaptable to the patient. The outsole, thanks to the features of movement control and pressure redistribution decompresses the areas affected by the injury, significantly improving ambulation and the recovery time.

### Product characteristics

- All uppers have super-soft padding with no internal seams to minimise the frictions.
- High thermoformed stiffener.
- Rigid, anti-flexion and rocking outsole. Variable volume.

### Adjustable

- Multi-velcro closures.

### Size

- S - XXL
- Select show size from EU show size (see chart).



### FPR SHOES

Designed to release pressure for the Forefoot and can help minimise pain and discomfort of plantar fasciitis and Achilles tendonitis. The FPR shoe can also help after metatarsal and phalangeal fractures and operations of the hallux.

**Product characteristics**

- Soft padded material on the inside.
- A padded rim protects the ends of the toes.

**Adjustable**

- Three hook and loop straps for multi-adjustment.

**Size**

- Fits the left & right feet.
- Select show size from EU show size (see chart).



FPR SHOES		
PRODUCT CODE	SIZE	SHOE SIZE
S-FIT-92-005-U1	XS	35 - 37
S-FIT-92-005-U2	S	38 - 39
S-FIT-92-005-U3	M	40 - 41
S-FIT-92-005-U4	L	42 - 43
S-FIT-92-005-U5	XL	44 - 45
S-FIT-92-005-U6	XXL	46 - 48

### FPR SHOES WITHOUT RIM

Provides pressure relief for the Forefoot and can be worn after metatarsal and phalangeal fractures and operations of the hallux. It can also help minimise pain and discomfort or plantar fasciitis and Achilles tendonitis. This version is without a toe rim to allow easy access to the ends of the toes.

**Product characteristics**

- Soft padded material on the inside.

**Adjustable**

- Three hook and loop straps for multi-adjustment.

**Size**

- Fits the left & right feet.
- Select show size from EU show size (see chart).



FPR SHOES WITHOUT RIM		
PRODUCT CODE	SIZE	SHOE SIZE
S-FIT-92-012-U1	XS	35 - 37
S-FIT-92-012-U2	S	38 - 39
S-FIT-92-012-U3	M	40 - 41
S-FIT-92-012-U4	L	42 - 43
S-FIT-92-012-U5	XL	44 - 45
S-FIT-92-012-U6	XXL	46 - 48

### SQUARED OFFLOAD HEALING SHOES

Minimises pain and discomfort for those with plantar fasciitis and achilles tendonitis.

**Product characteristics**

- Reduced 10% angle to minimise leg strain.
- Square toe design is to help accommodate the presence of K wires.

**Adjustable**

- Removable insole.

**Size**

- Fits the left & right feet.
- Select show size from EU show size (see chart).



SQUARED OFFLOAD HEALING SHOES			
PRODUCT CODE	SIZE	WIDTH (MM)	LENGTH (MM)
S-FIT-92-013-U1	XS	110	240
S-FIT-92-013-U2	S	110	255
S-FIT-92-013-U3	M	110	270
S-FIT-92-013-U4	L	115	285
S-FIT-92-013-U5	XL	120	300



### SQUARED TOE POST-OP SHOE

Designed for post-operative use the squared toe design gives more room to accommodate larger casts. It is also used for immobilisation and protection while wearing a cast, bandages and other wound care applications.

**Product characteristics**

- Squared toe design gives more room to accommodate larger casts.
- Higher ankle strap ads stability.
- Four-point support system and condyle pads for stabilising the knee joint.

**Adjustable**

- The Forefoot closure can be adjusted.

**Size**

- Fits the left & right feet.
- Select show size from EU show size (see chart).



SQUARED TOE POST-OP SHOE			
VERSION	PRODUCT CODE	SIZE	SHOE SIZE
MEN	S-FIT-92-014-MS	S	39 - 41
	S-FIT-92-014-MM	M	41 - 43
	S-FIT-92-014-ML	L	43 - 45
Women	S-FIT-92-014-WS	S	33 - 35
	S-FIT-92-014-WM	M	36 - 38
	S-FIT-92-014-WL	L	39 - 41



POLY CAST SHOE		
PRODUCT CODE	SIZE	SHOE SIZE
S-FIT-92-010-UXXXS	XXXS	23 - 27
S-FIT-92-010-UXXS	XXS	28 - 31
S-FIT-92-010-U1	XS	32 - 35
S-FIT-92-010-U2	S	36 - 38
S-FIT-92-010-U3	M	39 - 41
S-FIT-92-010-U4	L	42 - 43
S-FIT-92-010-U5	XL	44 - 46
S-FIT-92-010-U6	XXL	47 - 49
S-FIT-92-010-U7	XXXL	> 49

### POLY CAST SHOE

The Poly Cast Shoe is a versatile shoe for use with casts, bulky bandages and a variety of wound care applications.

**Product characteristics**

- Square toe design acts as a protective bumper.
- Latex Free.
- Higher ankle strap ads stability.
- Forefoot closure can be adjusted to accommodate large and bulky casts or bandages.
- The forefoot closures can be switched between left or right.

**Size**

- Fits the left & right feet.
- Select show size from EU show size (see chart).



### 3pp® TOE LOOPS®



The easy-to-apply loop and wrap design of the 3pp® Toe Loops® makes them the ideal choice to manage hammertoes, claw toes, overlapping toes and non-displaced fractures. The soft foam lining cushions and gently grips the toes to relieve pain from calluses or corns and makes it easy to realign overlapping toes.

3PP TOE LOOPS		
PRODUCT CODE	PRODUCT DESCRIPTION	SIZE
P5001-25	Toe Loops Narrow Pkg of 25	Narrow
P5001-5	Toe Loops Narrow Pkg of 5	Narrow
P5002-25	Toe Loops Wide Pkg of 25	Wide
P5002-5	Toe Loops Wide Pkg of 5	Wide

## SHOULDER & ELBOW SUPPORTS & BRACES



### RUSH ELBOW BRACE

This post-operative elbow brace is used for treatment and rehabilitation of injuries which require limitation of pronation and supination of the forearm and controlled motion.

#### Product characteristics

- Single ROM hinge to control elbow joint motion-adjustment every 10°.
- Quick lock at 0°, 15°, 30°, 45°.
- Possible elbow joint immobilization in chosen position.
- Additional suspension strap to offload and support the limb.

#### Adjustable

- Additional hand holder (see below).
- Adjustable length and circumference.

#### Size

- Universal.
- Brace length: 35 cm - 48 cm.
- Select option with or without handle (see table).

RUSH ELBOW BRACE		
PRODUCT CODE LEFT	PRODUCT CODE RIGHT	DESCRIPTION
DRQF0H0LA1ULP	DRQF0H0LA1URP	With Handle
DRQF0H0LAXULP	DRQF0H0LAXURP	Without Handle

### EDC SHOULDER SUPPORT

The EDC Shoulder Support protects the glenohumeral joint from dislocations/subluxation during sports activities. The support can provide functional preventive support for functional treatment.

#### Product characteristics

- Provides glenohumeral stability without immobilisation.
- Prevents glenohumeral dislocation/subluxation allowing full range-of-motion.
- Post Op support of anterior dislocation/instability.
- Made from comfortable and breathable fabric.

#### Adjustable

- The ROM control can be customised with strap adjustments.
- Fits easily under protective gear.
- Wide, flat Velcro and buckles for support.

#### Size

- S - L.
- Select size by measuring around biceps (see table).

EDC SHOULDER SUPPORT			
PRODUCT CODE LEFT	PRODUCT CODE RIGHT	SIZE	CIRCUMFERENCE AROUND BICEPS (CM)
S-FIT-40-003-L2	S-FIT-40-003-R2	S	< 27
S-FIT-40-003-L3	S-FIT-40-003-R3	M	27 - 30
S-FIT-40-003-L4	S-FIT-40-003-R4	L	> 31



## BACK BRACES



### PREMIUM CORSET - TLS

The premium corset is designed to be used as a non-invasive treatment that provides stability for multiple lumbar needs. Some of these needs are; segmentary instability after surgeries, follow-up treatment after neurological and orthopedic surgeries.

#### Product characteristics

- Made of soft, flexible, air permeable and hypo-allergenic fabrics.
- Two semi-rigid plastic stays and two supports in the back and two in the abdominal section to ensure external stabilisation.

#### Adjustable

- Additional tightening to adjust dorsal compression.

#### Size

- S - XXL.
- Select size by measuring waist circumference.



PREMIUM CORSET - TLS			
PRODUCT CODE	SIZE	WAIST CIRCUMFERENCE (CM)	HEIGHT (CM)
DRQH0US	S	85 - 95	33
DRQH0UM	M	95 - 105	33
DRQH0UL	L	105 - 115	35
DRQH0UXL	XL	115 - 125	35
DRQH0UXXL	XXL	125 - 135	35

### HYPEREXTENSION BRACE

Ideal for stabilisation of the thoracal-lumbrosacral part of the spinal column, immobilisation and for pathological deformation of vertebrae.

#### Product characteristics

- The highest quality of materials used; anodising aluminium.
- Light construction (total weight 1 kg).
- Soft lining for a comfortable fit.

#### Adjustable

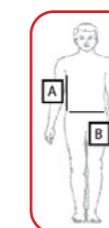
- Adapted to the sitting position; more than 90° flexion.

#### Size

- S - XL.
- Select size by measuring as per diagram below.



HYPEREXTENSION BRACE			
PRODUCT CODE	SIZE	LENGTH A (CM)	LENGTH B (CM)
S-FIT-30-001-U2	S	23 - 30	77 - 84
S-FIT-30-001-U3	M	23 - 30	78 - 90
S-FIT-30-001-U4	L	23 - 30	90 - 102
S-FIT-30-001-U5	XL	23 - 30	96 - 108





## HAND AND FOREARM SUPPORT

Designed to support and stabilise the wrist, hand and fingers whilst they are in bandages or dressings. This support is best used after surgeries that are for corrective positions, trigger fingers, carpal tunnel syndrome and rheumatoid arthritis.

### Product characteristics

- Can help prevent muscle contracture, peripheral nerve injuries and surgeries.
- Wrist and forearm splint with thumb spica.

### Adjustable

- Fixed with wide straps that are adjustable.
- Hook and Loop closures.

### Size

- XS - L.

NEW 2023



HAND AND FOREARM SUPPORT			
PRODUCT CODE LEFT	PRODUCT CODE RIGHT	SIZE	HAND WIDTH (CM)
Q42006LXSC	Q42006RXSC	XS	6 - 7
Q42006LSC	Q42006RSC	S	7 - 8
Q42006LMC	Q42006RMC	M	8 - 9
Q42006LLC	Q42006RLC	L	9 - 10

## WHOSP-FT

With the ability to support for the hand, thumb and forearm the Whosp-FT can provide stabilisation of specific areas for corrective and/or pain reducing settings. The support also helps sinew inflammation, carpal tunnel syndrome, rheumatic joint inflammation and contractures.

### Product characteristics

- Can help prevent muscle contracture, peripheral nerve injuries and surgeries.
- Wrist and forearm splint with thumb spica.

### Adjustable

- Adjustable to the patients needs and progress.
- Light frame made of steel and aluminium covered with PVE foam.
- Removable, soft padding with fingers separator.

### Size

- S - L

NEW 2023



WHOSP - FT			
PRODUCT CODE LEFT	PRODUCT CODE RIGHT	SIZE	HAND WIDTH (CM)
DRQF0D2PBXLSP	DRQF0D2PBXRSP	S	6.5 - 8
DRQF0D2PBXLMP	DRQF0D2PBXRMP	M	8 - 9.5
DRQF0D2PBXLLP	DRQF0D2PBXRLP	L	> 9.5



## CMC GUIDER

Thanks to its ergonomic frame, the CMC Guider provides superior support and excellent comfort of the CMC joint. As a result, symptoms such as pain and loss of strength are significantly reduced.

### Product characteristics

- Osteoarthritis of the CMC joint
- Postoperative treatment of the CMC joint
- Status after arthroplasty of the CMC joint
- Instability of the CMC joint and post-op use

### Adjustable

- Hook and Loop adjustable straps

### Size

- Universal



CMC GUIDER			
PRODUCT CODE LEFT	PRODUCT CODE RIGHT	SIZE	PALM CIRCUMFERENCE (CM)
E-WR009-LS	E-WR009-RS	S	16 - 19
E-WR009-LM	E-WR009-RM	M	19 - 23
E-WR009-LL	E-WR009-RL	L	23 - 26

## WRIST & THUMB SUPPORTS

Breathable mesh material outer with a padded interior make these very comfortable supports to aid patient compliance.



### Universal Thumb Support

- An adjustable main strap holds the support in place whilst a smaller thumb strap helps to prevent splint rotation and movement
- The internal plastic shell provides the support and protection of the injured thumb
- May be used with both left and right thumbs

### Wrist & Thumb Support

- Wrist splint with incorporated thumb support
- Three adjustable straps allow for an anatomical fit and slight compression if required
- The removable palmar splint provides excellent immobilization
- Strap around thumb support for improved fit
- Two additional lateral stays provide great stability

### Wrist Support

- Three adjustable straps allow for an anatomical fit and slight compression if required
- The removable palmar splint provides excellent immobilization
- Two additional lateral stays provide great stability

UNIVERSAL THUMB SUPPORT		
PRODUCT CODE	SIZE	WRIST CIRCUMFERENCE (CM)
DA0204002U2	S	17 - 19
DA0204002U3	M	20 - 22
DA0204002U4	L	22.5 - 24
DA0204002U5	XL	25 - 27

WRIST & THUMB SUPPORT			
PRODUCT CODE LEFT	PRODUCT CODE RIGHT	SIZE	WRIST CIRCUMFERENCE (CM)
DA0204003L2/3	DA0204003R2/3	S/M	14 - 19
DA0204003L4/5	DA0204003R4/5	L/XL	19 - 23

WRIST & THUMB SUPPORT			
PRODUCT CODE LEFT	PRODUCT CODE RIGHT	SIZE	WRIST CIRCUMFERENCE (CM)
DA0204007L2	DA0204007R2	S	13 - 15
DA0204007L3	DA0204007R3	M	15 - 18
DA0204007L4	DA0204007R4	L	18 - 20
DA0204007L5	DA0204007R5	XL	20 - 22





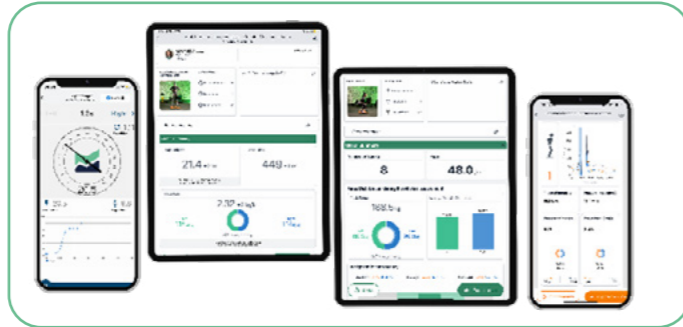
## KINVENT PHYSIO

Kinvent's cutting-edge sensors bring training and rehabilitation to the next level to assess your patient with unparalleled precision. Their range of connected devices instantly measure strength, balance and range of motion through their versatile and intuitive App.

### The Physio App

Objectively and instantaneously measure strength, balance and range of motion with the K-Force Pro app, available for Android and iOS.

Choose from 3 annual licenses to fit your rehabilitation and training assessment needs: K-Force Starter, K-Force Premium or K-Force Excellence.



### K-PULL - PULL DYNAMOMETER

Robust and versatile, the K-Pull is designed to objectively measure the isometric strength of powerful muscle groups.

Product code **DA050902FN**



### K-MOVE - MOTION SENSOR

Quickly measure range of motion to test and train mobility. Incorporate tempo training into your workouts to get the most out of every rep.

Product code **DA050803FN**



### K-GRIP - GRIP DYNAMOMETER

A connected dynamometer to measure grip strength. Dedicated to assessing and training grip strength. Evaluate in seconds with the App.

Product code **DA050402FN**



### K-PUSH - PUSH SENSOR

Your best light and versatile ally for quickly measuring the maximum strength of nearly 40 muscle groups. Supplied with its twin handle accessory for optimal handling.

Product code **DA050502FN**



### K-BUBBLE - PRESSURE SENSOR

The ideal tool to objectively measure patients' ability to exert pressure with any body part.

Product code **DA050604FN**



### K-FORCE PLATES - PORTABLE FORCE PLATES

The perfect solution for measuring static and dynamic balance in a wide range of movements like stance and squats.

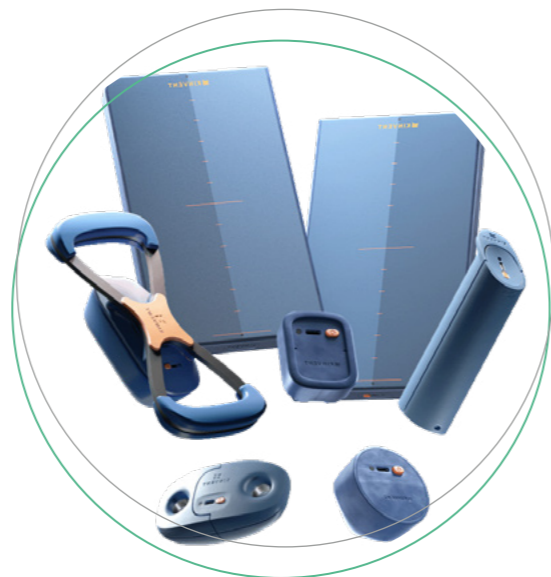
Product code **DA050703FN**

## REHAB PACK

The Rehab Pack includes everything you need to help you build patient motivation and ensure engagement in the long run. There are two more Kinvent packs available to choose from.

### Products included

- K-Push
- K-Force Plates
- K-Grip
- K-Move
- K-Bubble
- K-Pull
- Twin Handle



## BOBO HOME 2.0

The BoBo Home is a smart, interactive balance board that adapts any type of balancing surface into a smart training tool. With its bluetooth connection the board can be connected in a few moments to your smartphone or tablet, allowing you to perform precise exercises or simply to immerse yourself with interactive, motivational and effective games.

### Product characteristics

- Predefined and customisable training programs.
- Advanced rehabilitation protocols.
- Performance tracking.
- Maximised training efficiency.
- Easy set up.

The BoBo Home balance board has a premium wooden board, free iOS/Android App with built in exercises and games, built in Bluetooth motion sensor, anti-slip surface, holds up to 450lbs, a wide range of built-in games and predefined training programs!

Product code **DA05100015**



## CRYO PRO

Cold compression therapy works by constricting the blood vessels, which in turn reduces swelling and inflammation. Cold therapy can also help reduce the amount of bruising by slowing down blood flow to an injured area. In addition it can help reduce a patient's dependence on pain killers following injury.

### Product characteristics

- Portable design.
- Simple to use.
- Need to add only water and/or ice.
- Allows you to target specific areas of pain or swelling with multiple wrap variations.



### CRYO PRO, WRAPS & ACCESSORIES

PRODUCT CODE	DESCRIPTION
DA03020001	Dr Aktive Cryo Pro Control Unit
DA03020002	Dr Aktive Cryo Pro 360 Knee Wrap
DA03020003	Dr Aktive Cryo Pro Ankle Wrap
DA03020004	Dr Aktive Cryo Pro Shoulder Wrap
DA03020005	Dr Aktive Cryo Pro Universal Wrap
DA03020006	Dr Aktive Cryo Pro Portable Bag
DA03020007	Dr Aktive Cryo Pro Power Bank
DA03020016	Dr Aktive Cryo Pro Full Leg Wrap
DA03020017	Dr Aktive Cryo Pro Full Long Leg Wrap



# EXCELLENT QUALITY WITH BIODEGRADABLE TECHNOLOGY



We understand and support the importance of protecting our fragile environment which is one of the reasons why we have made our X-Lite® material biodegradable. As a true protector of nature you can compost it once all attachments like hooks, straps and padding are removed.

X-Lite® is the only casting material made from a cotton base impregnated with a non-toxic, safe polymer. The polymer is Polycaprolactone and it belongs to a group of polyester PCLs, which are a well-known implantable biomaterial.



### Biodegradable

A recent test of biodegradability according to ISO 14855-1 standard, showed that X-Lite® is 25% biodegraded after 90 days.

### Excellent Ventilation

The open structure in the material gives great ventilation and comfort. This allows the skin to breathe, besides providing an optimal environment for wound healing.



### Strong Material, Less Plastic

X-Lite® is an extremely strong material. Use significantly less layers of material for equal strength compared to other splinting and casting materials on the market.

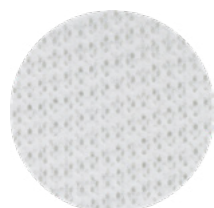
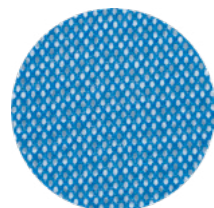
### Variable Rigidity

Add layers for additional rigidity without compromising the low profile. Add strips to areas where additional reinforcement or support is desired.



### Reusable and Remouldable

Save money and time. X-Lite® can be reheated an unlimited amount of times, allowing you to reuse rolls and leftovers. Make small changes on an already made cast/splint instead of a new one costing extra money, extra time and discomfort for your patient.



## X-Lite®

X-Lite® is an airy and lightweight Low Temperature Thermoplastic material engineered to meet your splinting, bracing and casting demands. The material is made from a 100% cotton mesh that has been impregnated with a non-toxic thermoplastic resin. All reactive substances in the thermoplastic have been cured, which means it does not contain any residues in unreacted form.

### Non-Toxic and Safe

X-Lite® is a non-toxic material and emits no harmful substances when heated, applied or in the drying process. The material can be applied without the use of gloves and special ventilation equipment in the casting room and upon removal of the cast no harmful dust is produced. It is safe for all users to work with X-Lite®, including pregnant women, asthmatic patients and people that suffer from allergic reactions.



X-Lite® is provided in three different options, Classic, Premium and Plus. The choice of product depends on the clinical indication and preference.

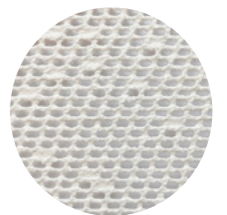
### X-Lite Classic®

Classic is the original X-Lite® material. The large mesh openings give great ventilation. As the strongest material in our range, you can use it for any cast or splint of your choice. With its open structure, it is the airiest of the three materials. It stretches and conforms well to contours for a perfect fit. Classic comes in sheets, dispenser box and rolls. The rolls have a plastic separator you remove to help unrolling during the cast making process

### X-Lite Premium®

X-Lite® Premium has a finer mesh than the Classic material and is even more conformable and stretchable.

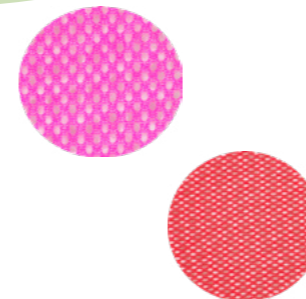
It is ideal for smaller joints and therefore for splints and casts for the upper extremity and children. If you want your splint or cast to be extra strong you might consider adding an extra layer. Premium comes in sheets, dispenser box and rolls. The rolls have a plastic separator you remove during the working process.



### X-Lite Plus®

X-Lite® Plus is the latest addition to the X-Lite® range. It is available in five colours and has a soft polyester fabric surface on one side.

Plus is almost similar in strength to Classic and can be used to make any cast or splint of your choice. It is made with X-Lite® premium combined with a polyester layer and it is supplied in various widths. Plus is a popular material for casting techniques. It is provided in both rolls, sheets and dispensers. Plus rolls form easily and quickly, directly on the patient.





**Visit us online**  
[www.kinetecuk.com](http://www.kinetecuk.com)

**UK Enquiries:**

Kinetec Medical Products UK Ltd  
7 Redan Hill Industrial Estate  
Redan Road  
Aldershot  
GU12 4SJ  
Tel: +44 3330 347400  
Fax: 01252 329415  
[enquiries@kinetecuk.com](mailto:enquiries@kinetecuk.com)  
[www.kinetecuk.com](http://www.kinetecuk.com)

**International Enquiries:**

Kinetec SAS  
Zone Industrielle de Tournes  
Rue Maurice Périn  
F-08090 Tournes  
France  
Tel: +33 324 29 85 05  
Fax: +33 324 33 51 05  
[contact@kinetec.fr](mailto:contact@kinetec.fr)  
[www.kinetec.fr](http://www.kinetec.fr)

**kinetec**<sup>®</sup>