



## INNOVATIVE DIGITAL SOLUTIONS

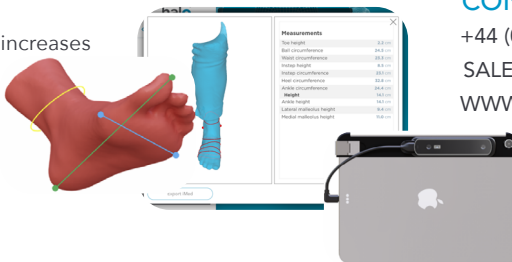
# HALO MEDICAL

Halo has been developing medical orthoses since 1998 and has grown to be one of the most specialised companies in bespoke orthoses within the UK, delivering exceptional quality and service with every order.

**We strive to incorporate the latest technological innovations and software in our manufacturing process to provide efficient and accurate services.**

### SCANNING SOFTWARE

- Allows you to scan the patient for a variety of body parts
- Provides a 3D Model of the patient's body part
- In-app prescription form prevents misinterpretation of hand writing
- Automatic and accurate measurements
- Provides an in-depth overview of the patients requirements
- Saves time and increases efficiency



### CAD/CAM SOFTWARE

- Accurate shoe last design
- No casting required
- Built-in Last database to automatically find the best fitting Last
- Time efficient & fast production
- Seamless work flow and integration with Patterns and Uppers software

### ROBOT MILLING MACHINE

- Produce precise Last's with our robot milling machine
- Rapid production - taking 5-15 minutes to finish a last
- Capable of producing 6 AFO's in just 30 minutes
- Option to mill torso and legs

### CONTACT US NOW:

+44 (0)3330 347400

SALES@HALO-MEDICAL.CO.UK

WWW.HALO-MEDICAL.CO.UK

**EXPERT EDUCATION**

**HALO ACADEMY**

*We can teach you*

At Halo Academy, our courses are open to individuals who have already attained their orthotics degree and are looking to further their education and experience by working closely with our highly skilled orthotists.

- Work directly with our very own Halo Medical orthotists
- Full range of modules designed by our expert orthotists
- All products and services are provided under the international medical quality standard ISO 13485
- Training on ordering directly from Halo



**LIVE WEBINAR TRAINING**

Get exclusive access to expert advice with our live training webinars directly through the academy. Watch out for updates and request to attend on our website.

*Courses include:*

- Choose your course by level, condition or body part
- Take multiple choice quizzes and test your knowledge
- Earn certificates upon successful completion of every course



**Insoles:**

Indications and Applications, Assessment, Observation, Palpation, Prescription examples



**Conditions:**

Diabetes, Clubfoot, MS, Stroke, Cerebral Palsy



**Footwear:**

Learn about the art of custom orthopaedic footwear manufacturing, including fitting and adjustment and precise measuring



**AFO's:**

Assessment, overview, different uses, using Halo prescription chart

**CONTACT US NOW:**

+44 (0)3330 347400

SALES@HALO-MEDICAL.CO.UK

WWW.THEHALOACADEMY.CO.UK